

Steering Committee Meeting #1

February 22, 2021

2 - 4 PM PDT

Virtual Conference Call Meeting via Zoom (see additional info at the end of the agenda)
<https://smcgov.zoom.us/j/96551239872?pwd=T3h1RUNkU3dCRW9YbDZtVGtieTh2QT09>

The public shall have an opportunity to comment on any action item as each item is considered by the Committee prior to action being taken as noted on the agenda and at the end of the meeting. This opportunity is non-transferrable, and speakers are limited to one two-minute (3) comment for each action item.

1. Welcome and Introductions – 2:00 – 2:15 PM

Dan Belville, Director, San Mateo County OES and Rita Mancera, Executive Director, Puente: Co-Chairs of the Steering Committee

Steering Committee Members are asked to introduce themselves in alphabetical order (see the attached Roster) and state their name, their title & organization, and share with the group the answer to “what does resilience mean to your community?”

- a. Steering Committee Roster (See Attachment A)
- b. Review Agenda

2. Project Overview – 2:15 – 2:30 PM

Bart Spencer (see Attachment B)

- a. Discussion: Overview
 - i. The Core Planning Team (CPT)
 - ii. The Steering Committee (SC)
 - iii. What is Mitigation Planning & Why is it Important?
 - iv. Work plan
 - v. Timeline

3. Steering Committee Ground Rules – 2:30 – 2:45 PM

Dan Belville and Rita Mancera, Co-Chairs (see Attachment C)

- a. Discussion: Steering Committee Ground Rules
- b. *Opportunity for Public Comment*
- c. Action: Confirm Steering Committee Ground Rules

4. Goal Setting – 2:45 – 3:05 PM

Bart Spencer, Tetra Tech, Inc. (see Attachment D)

- a. Discussion: Review Core Planning Team Recommendation - Guiding Principles, Goals and Objectives
- b. *Opportunity for Public Comment*
- c. Action: Confirm Guiding Principles, Goals and Objectives

5. Hazards of Concern – 3:05 – 3:25 PM

Rob Flaner, Tetra Tech, Inc. (see Attachment E)

- a. Discussion: Review Core Planning Team Recommendation - Hazards of Concern, State Plan
- b. *Opportunity for Public Comment*
- c. Action: Confirm the Hazards of Concern

6. Outreach and Engagement Plan – 3:25 – 3:45 PM

Jeana Wisner, Tetra Tech, Inc.

- a. Discussion: Outreach & Engagement Plan (See Attachment F)
- b. Discussion: Draft Survey #1 Review (See Attachment G)

7. Addressing Equity in the Local Hazard Mitigation Plan – 3:45 – 3:55 PM

Hilary Papendick, San Mateo County Office of Sustainability

- a. Discussion (See Attachment H)

8. Public Comment and Adjournment – 3:55 – 4:00 PM

Opportunity for Public Comment

Note that the public shall have an opportunity to comment on any action item as each item is considered by the Committee prior to action being taken.

This opportunity is non-transferrable, and speakers are limited to one three-minute (3) comment each.

9. Adjourn – Dan Belville and Rita Mancera, Co-Chairs

Next Meeting will be on March 22, 2021 from 2 pm – 4 pm

Agenda Items for Next Steering Committee Meeting include:

- a. Action: Confirm Definition of Critical Facilities and Infrastructure
- b. Discussion: Status Report on Phase 1 of the Jurisdictional Annex Process
- c. Discussion: Public Outreach Strategy: Phase 1 Public Meeting

Zoom Meeting Information

Join Zoom Meeting

<https://smcgov.zoom.us/j/96551239872?pwd=T3h1RUNkU3dCRW9YbDZtVGtieTh2QT09>

Meeting ID: 965 5123 9872

Passcode: 120978

One tap mobile

+16699006833,,96551239872#,,,,*120978# US (San Jose)

+12532158782,,96551239872#,,,,*120978# US (Tacoma)

ATTACHMENT A

Multijurisdictional Local Hazard Mitigation Plan

2021 Update



Steering Committee Roster (as of 2-17-21)

Organization Name	Last	First	Title	Email	Phone	Organization Type	Geographic Representation	Area of Expertise
San Mateo County Office of Emergency Services	Belville	Dan	Director	dbelville@smcgov.org		County	Countywide	Public Safety / Emergency Mgt.
MidPen Housing Corporation	Bielak	Andrew	Associate Director of Housing Development	abelak@midpen-housing.org	650.830.1360	Non-Profit	Countywide	Housing
CAL Fire San Mateo Division	Cosgrave	David	Division Chief	David.Cosgrave@fire.ca.gov	650.740.7247	County	Countywide	Public Safety / Fire
City of Daly City	Gamez	John	Captain (Police Department)	jgamez@dalycity.org	650.991.8180	City	North County	Public Safety / Police
San Mateo County Health System, Commission on Disabilities	Hall	Robert	President	rghall4@icloud.com	650.867.5256	County Commission	Countywide	Disabled Community
City of Redwood City	Kyaw	Terence	Director Public Works Services Department	tkyaw@redwoodcity.org	650.780.7466	City	South County	Public Works
Puente	Mancera	Rita	Executive Director	RMancera@mypuente.org		Non-Profit	South Coast (Pescadero/La Honda)	Vulnerable Communities
San Mateo County Community College District	Minkin	Ben'Zara	Emergency Manager	minkinb@smccd.edu		Education	Countywide	Education / Emergency Mgt.
North Fair Oaks Community Alliance	Rodriguez	Ever	President	erodriguez@northfoca.org	650.996.3796	Non-Profit	South County (North Fair Oaks)	Vulnerable Communities
Climate Resilient Communities	Saena	Violet	Director	violet.saena@crc.acterra.org	408.990.6447	Non-Profit	Countywide	Vulnerable Communities
San Mateo County Public Health (*)	Seara	Belen	Sr. Community Health Planner	bseara@smcgov.org	650-573-2319	County	Countywide	Public Health
SamTrans	Timbers	Amelia	Principal Planner Sustainability	TimbersA@samtrans.com	650-508-7713	Public Agency	Countywide	Transportation
Senior Coastsiders	Winter	Sandra	PhD, MHA, Executive Director	swinter@seniorcoastsiders.org	650.726.9056	Non-Profit	Coast	Senior Citizens

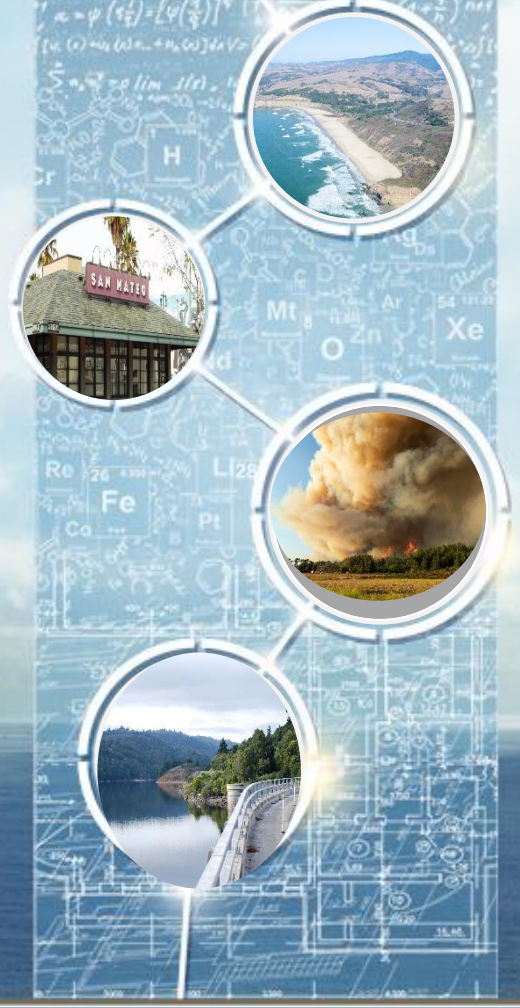
* Danielle Lee, Assistant Director, County of San Mateo, Office of Sustainability will serve as an alternate for the meeting on February 22, 2021

ATTACHMENT B



San Mateo County, CA Multijurisdictional Local Hazard Mitigation Plan Update

Steering Committee Meeting #1 February 22, 2021





Rob Flaner, CFM - Tetra Tech, Inc.

- Hazard Mitigation Program Manager
- Facilitated development of the last plan and the update
- Former FEMA Contractor
- Facilitated over 70 successful mitigation planning efforts since 2003

Bart Spencer, Tetra Tech, Inc

- Lead Project Planner
- Past project lead for SMC on 2016 Plan
- As preparedness practice lead for Tetra Tech, brings cross-functionality aspect to the team

- ❑ This process will be funded by a grant from FEMA awarded to the County.
- ❑ Tetra Tech, Inc. has been awarded the contract to facilitate this plan update process.
- ❑ Core Planning Team (CPT) will coordinate this plan update process and will convene bi-weekly over the course of the update.

The Core Planning Team Includes:

- Dan Belville, SMC OES
- Ann Ludwig, SMC OES
- Joe LaClair, SMC Planning & Building
- Rumika Chaudry, SMC Information Services
- Marcus Griswold, SMC Sustainability
- Hilary Papendick, SMC Sustainability
- David Cosgrave, Coastside FPD
- Carolyn Bloede, SMC Sustainability
- Rob Flaner, Tetra Tech
- Bart Spencer, Tetra Tech
- Jeana Wisner, Tetra Tech
- Carol Baumann, Tetra tech
- Des Alexander, Tetra Tech

- As was done with the prior planning efforts, this update will be facilitated through a stakeholder Steering Committee
- Steering Committee will have Multi-Disciplined representation – very important
 - **Planning partners representative(s)**
 - **Citizens**
 - **Stakeholders (Business, academia, government)**
 - **Emergency Management**
- ***The CPT has identified candidates to serve on the SC. For more information on that makeup, please reach out to Ann Ludwig***

What is Mitigation?

Five Phases of
Emergency Management



“Sustained action taken to reduce or eliminate long-term risk to life and property”

- Seismic retrofit of buildings and bridges
- Redundancy of water systems and fuel systems
- Tree planting to reduce heat in urban cores
- Education programs to be better informed of risks
- Policies– building codes and zoning
- Incentives – grants or financial assistance for risk reduction at business and household level

What is the Disaster Mitigation Act (DMA)?

Federal legislation that establishes a pre-disaster hazard mitigation program and new requirements for the national post-disaster Hazard Mitigation Grant Program (HMGP).

=

Federal \$\$\$ for pre-disaster and post-disaster hazard mitigation projects in San Mateo County.

No Plan, No Money!

Provisions of the Disaster Mitigation Act (DMA)

- Encourages and rewards local and state pre-disaster planning (\$\$\$ for projects)
- Integrates state and local planning
- Results in faster more efficient allocation of funding and more effective risk reduction projects
- Specifies required plan components:
 - *risk assessment*
 - *public outreach and participation*
 - *process for update*
 - *formal review State and FEMA review*
 - *documentation of acceptance by the community*

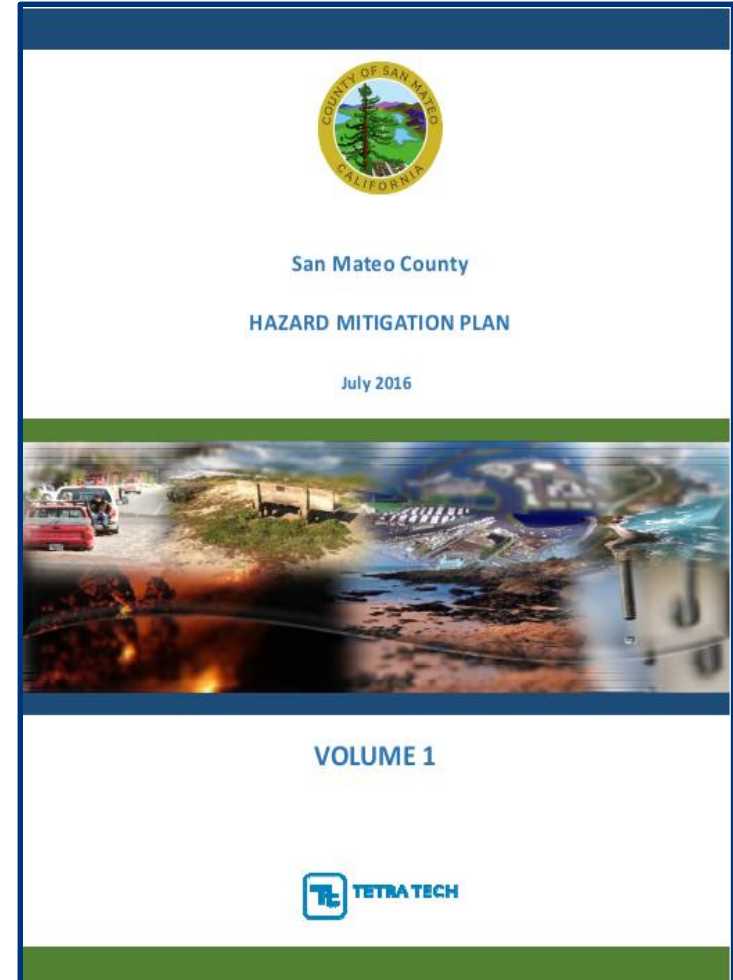
- Establish eligibility for grant funds (\$\$\$ for projects)
- Improve understanding of risks and vulnerabilities
- Reduce negative impact of natural hazards – actions save lives, reduce displacement, and speed recovery
- Encourage sustainable actions – builds strong, resilient, and self-sufficient communities
- Foster collaboration between local jurisdictions and residents

Other Benefits to Hazard Mitigation Planning

- Hazard Mitigation Plans contribute to a community's Community Rating System (CRS) score
- What is Community Rating System?
 - *A FEMA/National Flood Insurance voluntary incentive program that encourages floodplain management activities*
 - *Reduces potential flood damages and can decrease flood insurance rates \$\$*
- The Following Communities within SMC participate in the CRS program
 - *Burlingame*
 - *East Palo Alto*
 - *Pacifica*
 - *San Carlos*
 - *San Mateo County*



- ✓ 29 Planning Partners
- ✓ Was an update to prior plans led by ABAG
- ✓ Identified and prioritized over 590 actions
- ✓ Plan approved by FEMA on September 14, 2016
- ✓ Plan expires on September 14, 2021



STAKEHOLDER AND PUBLIC OUTREACH



PHASE 1 ELEMENTS

- Form Core Planning Team (CPT)
- Form Steering Committee (SC)
- Kick-off meeting
- Facilitate SC meetings
- Facilitation materials (Digital and Hard Copy)
- Agency & Stakeholder Coordination
- Plan/programs/Studies review

PHASE 2 ELEMENTS

- Data acquisition and gap analysis
- Identification of the hazards of concern
- Map extent and severity of countywide hazards
- Perform vulnerability analysis
- New development risk analysis
- Format data for public involvement strategy

PHASE 3 ELEMENTS

- Perform public outreach capability assessment
- Facilitate development of public involvement
- Implement strategy:
 - Public response through questionnaire
 - Develop Story-Map
 - Website postings and outreach
 - Media releases
 - Public meetings
 - Utilize social media
 - HAZUS workstations

PHASE 4 ELEMENTS

- Confirm Goals
- Identify Objectives (if applicable)
- Strengths, Weaknesses, Obstacles and Opportunities (SWOO) Analysis session
- Prepare Mitigation Catalog of BMP's
- Core capability assessment
- Prioritization Schedule

PHASE 5 ELEMENTS

- Develop plan maintenance strategy
- Continued access to the BAToolSM Program

PHASE 7 ELEMENTS

- Prepare Public Review Draft
- Prepare Final Draft
- Complete Plan Review Tool
- Submit draft plan to Cal OES
- Plan adoption Support

PHASE 6 ELEMENTS

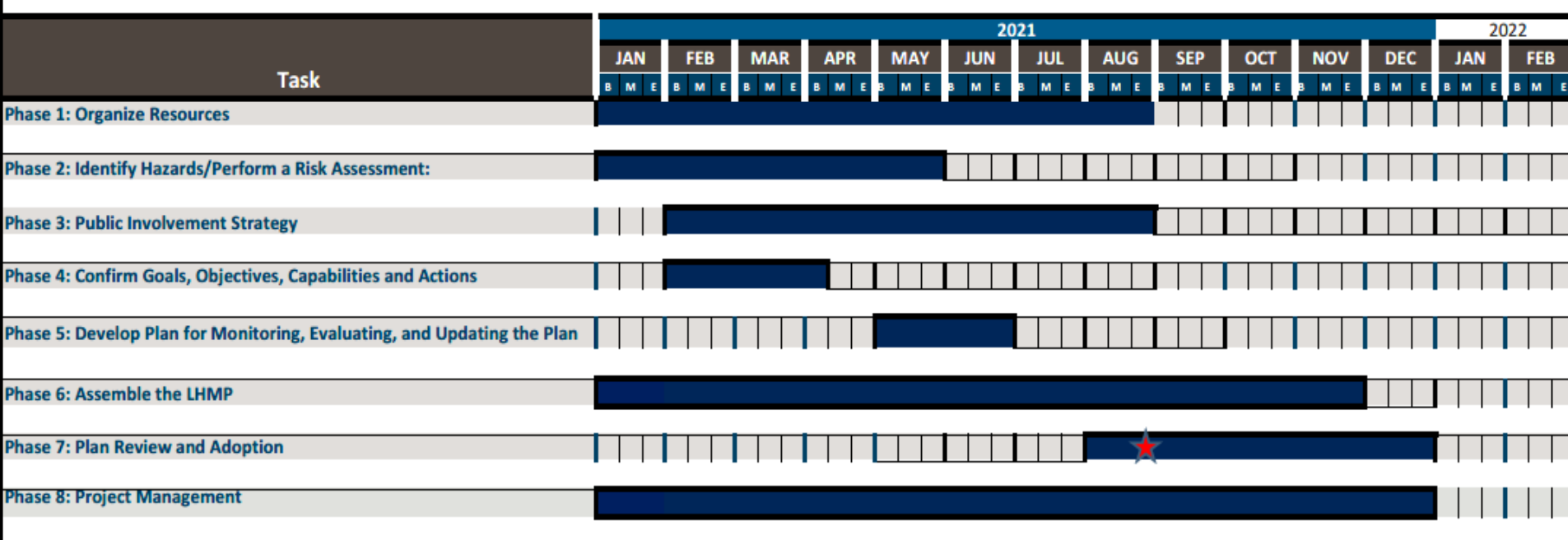
- Prepare Draft Plan
- Phased deployment of jurisdictional annex process
- Jurisdictional Annex Workshop
- Benefit Cost Analysis (BCA) Training

PHASE 8 ELEMENTS

- Critical path maintenance
- Invoicing
- Monthly progress reporting
- Quarterly progress reporting to Cal OES
- Agendas and reference information for all meetings
- Minutes for all conference calls and meetings (within 10 working days of



HAZARD MITIGATION PLAN TIMELINE



Notes:
 Plan submittal to CAOES

- Schedule projects an 8-month time frame, with 6 months for plan development
- Target for submittal to CalOES would be End of August 2021
- ***This schedule all depends on you!***

ATTACHMENT C

Steering Committee Ground Rules

For Discussion on February 22, 2021



Purpose

As the title suggests, the role of the Steering Committee is to guide the San Mateo County Planning Partners through the process of drafting a Multijurisdictional Hazard Mitigation Plan. This process will result in a plan that can be embraced both politically and by the constituency within the planning area.

The Committee will provide guidance and leadership, oversee the planning process, and act as the point of contact for all partners and the various interest groups in the planning area. The makeup of this committee was selected to provide the best possible cross section of views to enhance the planning effort and to help build support for hazard mitigation.



Co-Chairs

The Co-Chairs will be San Mateo County OES Director, Dan Belville and Puente, Executive Director, Rita Mancera. The role of a co-chair is to:

1. lead meetings so that agendas are followed, and meetings adjourn on-time,
2. allow all members to be heard during discussions,
3. moderate discussions between members with differing points of view,
4. be a sounding board for staff in the preparation of agendas and how to best involve the full Committee in work plan tasks,
5. to act as spokesperson during public involvement processes and public interchanges

At least one co-chair will be present at any given meeting.



Attendance

Participation of all Committee members in meetings is important and members should make every effort to attend each meeting. If Committee members cannot attend, they should inform the San Mateo County Project Manager, Ann Ludwig, before the meeting. If a member misses two meetings without an explanation, the Committee may choose to write an email to the member to confirm interest and may ultimately seek to replace the member.



Quorum

A minimum attendance at each meeting often is needed to ensure that the different viewpoints of Committee members are adequately represented.



Courtesy

Committee members should treat one another with respect, listen to each other, work collegially, and allow all members to voice their opinions.



Decision-Making

As the Committee provides advice and guidance on the Plan, it will reach its recommendations through 1) consensus or 2) voting. Consensus is defined as a recommendation that may not be ideal for each Committee member, but that every member can live with (using the consensus continuum as a gauge). Voting is defined as “majority rules,” and the majority will be based on the number of Steering Committee members in attendance.

Consensus will be the preferred method of decision making. However, if consensus cannot be reached on a given issue, then voting will be used to determine the Committee’s recommendation. In either case, minority dissent will be recorded in the meeting summaries, and the Committee will note such opinions in their final recommendations.



Recommendations

The Committee's recommendations will be recorded in the meeting summaries and reflected in the plan as appropriate. The Committee may also assist in the presentation of the Plan to the elected bodies of participating organizations.



Spokespersons

Ideally, the Committee will present a united recommendation after considering the different viewpoints of its members, recognizing that each member might have made a somewhat different recommendation as an individual.

To consistently represent the Committee’s united recommendations to participating organizations, the public, and the media, the Committee spokespersons will be the same as the Committee Co-Chairs. In addition, each member should have a responsibility to represent the Committee’s recommendation when speaking on Plan-related issues as a Committee member. Any differing personal or organizational viewpoints should be clearly distinguished from the

Committee's work. Finally, Committee members will need to help with presentations to outside organizations, especially the type of organizations that a Committee member represents.



Public Involvement

As they conduct Committee work, members will seek to keep the public and the groups to which they are affiliated informed about the Plan. Committee meetings will be open to the public, and agendas and minutes will be posted on the project web-page.

The preferred method of public input will be via emailed documents to the County Project Manager, Ann Ludwig (c_aludwig@smcgov.org) or to the County's Project email address (MJLHMP@smcgov.org).

Comments will also be taken at the beginning and end of meetings with a 3 minute limit per person and will be taken prior to any action taken by the Committee.

Public Outreach strategies will include media releases, social media, such as Next Door, Facebook and Twitter, and a website for the Plan Update with a link to Steering Committee and other public meetings.



Staffing

The Core Planning Team for this project includes appropriate personnel from San Mateo County along with contract consultant assistance provided by Tetra Tech, Inc. The Core Planning Team will schedule meetings, distribute agendas, prepare information/presentations for Committee meetings, send out meeting summaries, and generally seek to facilitate the Committee's activities.



Meetings

Meetings will be held on the 4th Monday of each month from 2:00 – 4:00 pm between February 2021 and July 2021.

- February 22, 2021 from 2:00 – 4:00 pm
- March 22, 2021 from 2:00 – 4:00 pm
- April 26, 2021 from 2:00 – 4:00 pm
- May 24, 2021 from 2:00 – 4:00 pm
- June 28, 2021 from 2:00 – 4:00 pm
- July 26, 2021 from 2:00 – 4:00 pm

ATTACHMENT D

Draft 2021 LHMP Guiding Principles, Goals, and Objectives

As reviewed and recommended by CPT on 2/2/2021

1.1 Guiding Principles

A guiding principle focuses the range of objectives and actions to be considered. A guiding principle is not a goal because it does not describe a hazard mitigation outcome and it is broader than a hazard-specific objective. The guiding principles for the San Mateo County Hazard Mitigation Plan are as follows:

1. Provide a dynamic, actionable approach to hazard planning that integrates with other planning mechanisms to enhance or support hazard mitigation.
2. Invite and enhance the public's awareness and understanding of hazards and their input on hazard prioritization and mitigation.
3. Create a decision-making tool for policy and decision makers.
4. Prioritize multi-benefit actions that reduce risk to vulnerable communities, protect those most at risk, and advance equity, including across racial, ethnic and rural/urban lines.
5. Promote compliance with State and Federal Program requirements.
6. Assure inter-jurisdictional coordination on hazard mitigation activities.
7. Integrate the concepts of climate change into the mitigation planning process.
8. Support economic viability, including for those who are most economically vulnerable, after a hazard event.
9. Assure a safe, respectful, non-discriminatory, and inclusive response to hazard events

1.2 Goals

The following are the mitigation goals for this plan:

1. Protect life and property including, protecting the health and safety of communities;
2. Provide information to residents to better understand the hazards of the region and ways to reduce their personal vulnerability to those hazards;
3. Promote hazard mitigation as an integrated public policy and as a standard business practice;
4. Integrate climate change strategies to increase resiliency of community lifelines (infrastructure and critical facilities) from the impact of climate change;
5. Protect and preserve the environment;
6. Develop and implement hazard mitigation strategies that use public funds in an efficient and cost-effective way;
7. Develop hazard mitigation strategies that eliminate disparities and provide access to quality services for all unserved, underserved, under-resourced, and ineffectively serviced Individuals and families; and,
8. Improve community emergency management capability.

The effectiveness of a mitigation strategy is determined by how well these goals are achieved.

1.3 Objectives

Each selected objective meets multiple goals, serving as a stand-alone measurement of the effectiveness of a mitigation action, rather than as a subset of a goal. The objectives also are used to help establish priorities. The objectives are as follows:

1. Improve understanding of the locations, potential impacts, and linkages among threats, hazards, vulnerability, and measures needed to protect life, safety and health.
2. Establish and maintain partnerships among all levels of government, the private sector, community groups, and institutions of higher learning that improve and implement methods to protect life and property.
3. Conduct community outreach activities that increase stakeholder awareness and understanding of hazard risk, mitigation options, and preparedness strategies and which include community input into risks, prioritization and measures.
4. Prevent or reduce mitigation-related disparities affecting under-served and under-represented communities through plans, investments and engagement.
5. Ensure an inclusive process by considering equity throughout the process, providing opportunities for community involvement throughout planning and implementation, and endeavoring to incorporate input to the extent possible.
6. Ensure a transparent planning process which regularly reports back on how input was used.
7. Develop and provide updated information about threats, hazards, vulnerabilities, climate change, and mitigation strategies to state, regional, and local agencies, as well as private-sector and community groups.
8. Encourage incorporation of hazard mitigation measures into repairs, major alterations, new development, and redevelopment practices, especially in areas subject to substantial hazard risk and/or repetitive loss.
9. Promote and implement hazard mitigation plans and projects based on best available data and science that are consistent with state, regional, and local climate action and adaptation goals, policies, and programs.
10. Advance community resilience through preparation, adoption, and implementation of state, regional, and local hazard mitigation plans and projects.
11. Encourage life and property protection measures for all communities, structures, and community lifelines (infrastructure and critical facilities) located in hazard areas.
12. Actively promote effective coordination of regional and local hazard mitigation planning and action among state agencies, cities, counties, special districts, tribal organizations, councils of governments, community-led planning efforts, metropolitan planning organizations, and regional transportation organizations to create resilient and sustainable communities.
13. Improve systems that provide warning and emergency communications including evaluation of their inclusiveness and accessibility.
14. Promote dialogue between government representatives, private business, non-profit, faith and community-based organizations, and the public regarding hazard mitigation.

15. Build County and Annex Partners staff and community-based organization staff capacity to ensure effective implementation and equitable outcomes of hazard mitigation action efforts.
16. Retrofit, purchase, or relocate structures in high hazard areas, especially those known to be repetitively damaged.
17. Where feasible, identify and implement strategies that utilize nature-based solutions.

ATTACHMENT E

2021 HAZARDS TO INCLUDE IN 2021 MJLHMP

As reviewed and recommended by the CPT on 2/2/2021

Type of Hazard	Primary Hazard	Secondary Hazard
Natural Hazard	Climate Change	Sea Level Rise, Changes in Precipitation Patterns (Drought, Flood, Atmospheric Rivers, Debris Flows), Erosion, Heat, Wildfire, Poor Air Quality, Power Failures, Coastal Erosion, Groundwater Contamination in Shallow and Deep Aquifers
	Dam Failure	Landslides/Debris Flow, Changes in Precipitation Patterns (Drought, Flood, Atmospheric Rivers), Earthquake
	Drought	Wildfire, Poor Air Quality, Power Failures, Heat, Groundwater Contamination in Shallow and Deep Aquifers
	Earthquake	Precipitation, Fires, Floods
	Flood	Debris Flow, Changes in Precipitation Patterns (Drought, Flood, Atmospheric Rivers), Health; Coastal Erosion and Coastal Flooding
	Landslide/Mass Movements	Debris Flow, Sink holes, Changes in Precipitation Patterns (Drought, Flood, Atmospheric Rivers)
	Severe Weather/Extreme Weather	Atmospheric Rivers, Extreme heat, extreme cold, lightning sieges, Poor Air Quality, Power Failures, Health
	Wildfire	Landslides/Debris Flow, Severe Weather, Poor Air Quality, Power Failures, Health & Pandemic
	Tsunami	
	Health & Pandemic	

Type of Hazard	Primary Hazard	Secondary Hazard
Human Caused	Terrorism	
	Cyber Threats	Power Failures, Health & Pandemic
	Communication Failure (Cell Networks, Internet, Public Safety Radio Networks)	Power Failures, Health & Pandemic
Technological Hazards	Hazardous Materials Release	Health & Pandemic, Sea Level Rise, Precipitation Patterns, Erosion
	Pipeline & Tank Failure	Health & Pandemic
	Aircraft Incidents	Wildfire

-

ATTACHMENT F



San Mateo County, CA Multijurisdictional Local Hazard Mitigation Plan Update

Outreach & Engagement Plan February 2021

Overview

- Provide an accessible website to provide regular updates during all phases of the MJLHMP update.
- Utilize conventional and social media to announce the project and supplement survey and public workshop activities by engaging a wide range of community partners.
- Leverage multiple and on-going opportunities for public input to reach San Mateo County's diverse residents and stakeholders and to satisfy FEMA's public outreach requirements.

Priorities

- Digital outreach strategy that includes an accessible website and ArcGIS Story-Map
- Surveys available in 6 languages: English, Spanish, Simple Chinese, Tagalog, Tongan, and Arabic
- Public Workshops
- Cross-promotions with similar engagement efforts in the County, partner jurisdictions, and community partners



Timeline: February - August 2021

Month	Activity	Dates
February	Project Website Live	Feb. 12
March	Survey #1: Risks	March 15 – April 30
	Public Workshop #1: Planning Process and Hazards/Risks	March 25, 4 pm
April	Publish ArcGIS StoryMap with initial risk analysis results	
May/June	Survey #2: Mitigations	Early May - June
July	Public Workshop #2: Mitigation Strategies	Week of July 19
August	Draft Plan released for Comment	August 2 - 13
	Plan submitted to CalOES/FEMA	August 31

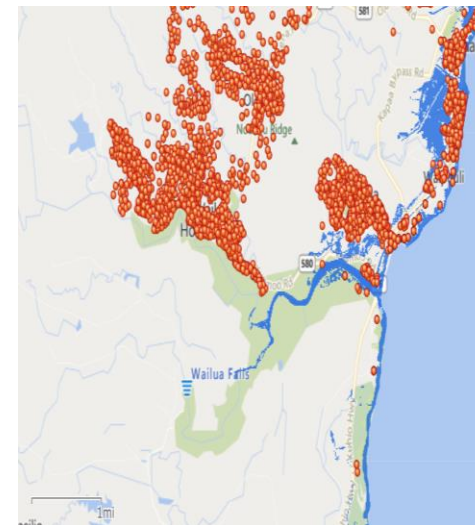
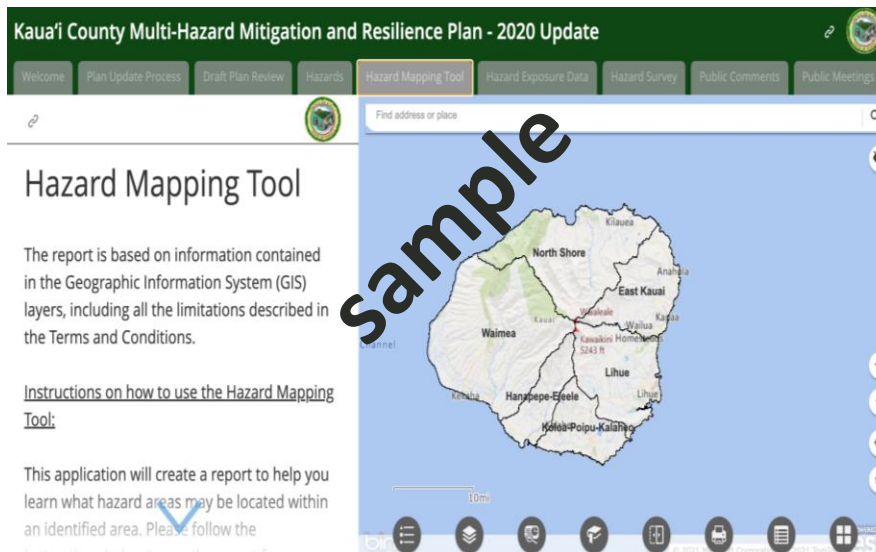


- <https://cmo.smcgov.org/multijurisdictional-local-hazard-mitigation-plan>

Multijurisdictional Local Hazard Mitigation Plan



- The ArcGIS Story-Map platform will serve as a visual tool to display risk analysis data and Plan elements.
- The County will use in the future to communicate hazard risk in an engaging way.
- The initial Story-Map is anticipated to be available to the public via the website in April 2021.



- **Survey #1 – March 15 – April 30**
 - **Questions to Assess how Residents Perceive Risks**
 - Survey logic built-in to route participants based on housing status: homeowner, renter, or currently unhoused/temporary housing
- **Survey #2 – May – June**
 - **Questions to Assess Residents' Ideas for Mitigations**



- **Public Workshop #1 – March 25 at 4 pm**
 - Focus on the Planning Process and Community Input on Hazards/Risk

- **Public Workshop #Survey #2 – Week of July 19, date TBD**
 - Focus on Community's Ideas for Mitigations



Questions?



ATTACHMENT G



San Mateo County Multijurisdictional Local Hazard Mitigation Plan Update Survey 2021

Survey Introduction

San Mateo County is vulnerable to many natural hazards - including earthquakes, wildfire, flooding, coastal erosion, and heat events. The County is in the process of developing an update to its current plan to reduce risks from hazards countywide, and we want to hear from you about your experiences with all types of hazards. The plan being updated is known as the 2016 San Mateo County Local Hazard Mitigation Plan. An update is required by the Federal Emergency Management Agency (FEMA) every 5 years and ensures the County is eligible to receive funding to prepare and respond to disasters.

The safety of San Mateo County residents, businesses and organizational members, especially during a disaster, is one of the County's greatest priorities. This survey is designed to help the County gauge the level of knowledge community members have about the region's top hazards. The information you provide will directly support the development of strategies and actions to reduce the risk of death, injuries and property damage caused by disasters.

The survey consists of 31 questions and provides an opportunity for you to write comments at the end. It will take approximately 10 minutes to complete. When you have finished the survey, please select [Done] on the final page.

San Mateo County thanks you for taking the time to participate in this information-gathering process. For more information on the LHMP and to get involved, please visit: <https://cmo.smcgov.org/multijurisdictional-local-hazard-mitigation-plan>.



San Mateo County Multijurisdictional Local Hazard Mitigation Plan Update Survey 2021

Experience

1. Have you ever experienced, or been impacted, physically or financially, by a natural disaster in San Mateo County?

- Yes
- No



San Mateo County Multijurisdictional Local Hazard Mitigation Plan Update Survey 2021

2. What type of hazard was the cause of the disaster you experienced? What happened? (Check all that apply and please explain what happened in the "Comments")

- | | |
|---|--|
| <input type="checkbox"/> Dam failure | <input type="checkbox"/> Coastal or bay flooding |
| <input type="checkbox"/> Earthquake | <input type="checkbox"/> Riverine flooding |
| <input type="checkbox"/> Wildfire | <input type="checkbox"/> Drought |
| <input type="checkbox"/> Street flooding from storm | <input type="checkbox"/> Poor air quality |
| <input type="checkbox"/> Public health - epidemic or pandemic | <input type="checkbox"/> Terrorism |
| <input type="checkbox"/> Extreme heat | <input type="checkbox"/> Cyberthreats |
| <input type="checkbox"/> Extreme cold | <input type="checkbox"/> Power failures |
| <input type="checkbox"/> Landslides | <input type="checkbox"/> High winds |
| <input type="checkbox"/> Coastal erosion | <input type="checkbox"/> Climate change |
| <input type="checkbox"/> Comments | |



San Mateo County Multijurisdictional Local Hazard Mitigation Plan Update Survey 2021

Preparedness

* 3. How prepared is your household to deal with a hazard event?

	Not at all prepared	Somewhat prepared	Adequately prepared	Well prepared	Very well prepared
Check one:	<input type="radio"/>	<input type="radio"/>	<input type="radio"/>	<input type="radio"/>	<input type="radio"/>

4. Please select any of the means listed below that have helped you become more prepared for emergencies and disasters. (Check all that apply)

- | | |
|--|--|
| <input type="checkbox"/> Emergency preparedness information from a government source (e.g., federal, state, or local emergency management) | <input type="checkbox"/> Church or other religious organization |
| <input type="checkbox"/> Experience from involvement in one or more hazards or disasters | <input type="checkbox"/> Attended meetings that have provided information on disaster preparedness |
| <input type="checkbox"/> Locally provided news or other media information | <input type="checkbox"/> Community Emergency Response Training (CERT) or other disaster training program |
| <input type="checkbox"/> Schools and other academic institutions | <input type="checkbox"/> Emergency preparedness information from a local utility (e.g. power, water, etc.) |
| <input type="checkbox"/> Other (please specify) | |

* 5. How concerned are you about the following hazards in San Mateo County?

(Check one response for each hazard)

	Not Concerned	Somewhat Concerned	Concerned	Very Concerned	Extremely Concerned
Dam failure	<input type="radio"/>	<input type="radio"/>	<input type="radio"/>	<input type="radio"/>	<input type="radio"/>
Earthquake	<input type="radio"/>	<input type="radio"/>	<input type="radio"/>	<input type="radio"/>	<input type="radio"/>
Wildfire	<input type="radio"/>	<input type="radio"/>	<input type="radio"/>	<input type="radio"/>	<input type="radio"/>
Street flooding from storm	<input type="radio"/>	<input type="radio"/>	<input type="radio"/>	<input type="radio"/>	<input type="radio"/>
Public health - epidemic or pandemic	<input type="radio"/>	<input type="radio"/>	<input type="radio"/>	<input type="radio"/>	<input type="radio"/>
Extreme heat	<input type="radio"/>	<input type="radio"/>	<input type="radio"/>	<input type="radio"/>	<input type="radio"/>
Extreme cold	<input type="radio"/>	<input type="radio"/>	<input type="radio"/>	<input type="radio"/>	<input type="radio"/>
Landslides	<input type="radio"/>	<input type="radio"/>	<input type="radio"/>	<input type="radio"/>	<input type="radio"/>
Coastal erosion	<input type="radio"/>	<input type="radio"/>	<input type="radio"/>	<input type="radio"/>	<input type="radio"/>
Coastal or bay flooding	<input type="radio"/>	<input type="radio"/>	<input type="radio"/>	<input type="radio"/>	<input type="radio"/>
Riverine flooding	<input type="radio"/>	<input type="radio"/>	<input type="radio"/>	<input type="radio"/>	<input type="radio"/>
Drought	<input type="radio"/>	<input type="radio"/>	<input type="radio"/>	<input type="radio"/>	<input type="radio"/>
Poor air quality	<input type="radio"/>	<input type="radio"/>	<input type="radio"/>	<input type="radio"/>	<input type="radio"/>
Terrorism	<input type="radio"/>	<input type="radio"/>	<input type="radio"/>	<input type="radio"/>	<input type="radio"/>
Cyberthreats	<input type="radio"/>	<input type="radio"/>	<input type="radio"/>	<input type="radio"/>	<input type="radio"/>
Power failures	<input type="radio"/>	<input type="radio"/>	<input type="radio"/>	<input type="radio"/>	<input type="radio"/>
High winds	<input type="radio"/>	<input type="radio"/>	<input type="radio"/>	<input type="radio"/>	<input type="radio"/>
Climate change	<input type="radio"/>	<input type="radio"/>	<input type="radio"/>	<input type="radio"/>	<input type="radio"/>

(Please specify other hazard)

* 6. Which of the following steps has your household taken to prepare for a disaster? (Provide a response for all)

	Have done	Plan to do in the near future	Have not done	Unable to do
Received First Aid/CPR training	<input type="radio"/>	<input type="radio"/>	<input type="radio"/>	<input type="radio"/>
Created a fire escape plan	<input type="radio"/>	<input type="radio"/>	<input type="radio"/>	<input type="radio"/>
Designated an evacuation meeting place	<input type="radio"/>	<input type="radio"/>	<input type="radio"/>	<input type="radio"/>
Identified the utility shutoff	<input type="radio"/>	<input type="radio"/>	<input type="radio"/>	<input type="radio"/>
Prepared a disaster supply kit	<input type="radio"/>	<input type="radio"/>	<input type="radio"/>	<input type="radio"/>
Installed smoke and carbon monoxide detectors on each level of your house	<input type="radio"/>	<input type="radio"/>	<input type="radio"/>	<input type="radio"/>
Written and practiced your family disaster plan	<input type="radio"/>	<input type="radio"/>	<input type="radio"/>	<input type="radio"/>
Stored food and water (2-week supply)	<input type="radio"/>	<input type="radio"/>	<input type="radio"/>	<input type="radio"/>
Participated in neighborhood disaster preparedness and planning	<input type="radio"/>	<input type="radio"/>	<input type="radio"/>	<input type="radio"/>
Stored flashlights and batteries	<input type="radio"/>	<input type="radio"/>	<input type="radio"/>	<input type="radio"/>
Purchased an air filter	<input type="radio"/>	<input type="radio"/>	<input type="radio"/>	<input type="radio"/>
Stored battery-powered radio	<input type="radio"/>	<input type="radio"/>	<input type="radio"/>	<input type="radio"/>
Stored fire extinguisher	<input type="radio"/>	<input type="radio"/>	<input type="radio"/>	<input type="radio"/>
Purchased a generator	<input type="radio"/>	<input type="radio"/>	<input type="radio"/>	<input type="radio"/>
Stored medical supplies, including necessary medications	<input type="radio"/>	<input type="radio"/>	<input type="radio"/>	<input type="radio"/>

(Please specify other action)

* 7. Are hazard events in San Mateo County becoming more or less common over the past 5 years? (Check one response for each hazard)

	Less Common	Stayed About the Same	Much More Common	Don't Know
Dam failure	<input type="radio"/>	<input type="radio"/>	<input type="radio"/>	<input type="radio"/>
Earthquake	<input type="radio"/>	<input type="radio"/>	<input type="radio"/>	<input type="radio"/>
Wildfire	<input type="radio"/>	<input type="radio"/>	<input type="radio"/>	<input type="radio"/>
Street flooding from storm	<input type="radio"/>	<input type="radio"/>	<input type="radio"/>	<input type="radio"/>
Public health - epidemic or pandemic	<input type="radio"/>	<input type="radio"/>	<input type="radio"/>	<input type="radio"/>
Extreme heat	<input type="radio"/>	<input type="radio"/>	<input type="radio"/>	<input type="radio"/>
Extreme cold	<input type="radio"/>	<input type="radio"/>	<input type="radio"/>	<input type="radio"/>
Landslides	<input type="radio"/>	<input type="radio"/>	<input type="radio"/>	<input type="radio"/>
Coastal erosion	<input type="radio"/>	<input type="radio"/>	<input type="radio"/>	<input type="radio"/>
Coastal or bay flooding	<input type="radio"/>	<input type="radio"/>	<input type="radio"/>	<input type="radio"/>
Riverine flooding	<input type="radio"/>	<input type="radio"/>	<input type="radio"/>	<input type="radio"/>
Drought	<input type="radio"/>	<input type="radio"/>	<input type="radio"/>	<input type="radio"/>
Poor air quality	<input type="radio"/>	<input type="radio"/>	<input type="radio"/>	<input type="radio"/>
Terrorism	<input type="radio"/>	<input type="radio"/>	<input type="radio"/>	<input type="radio"/>
Cyberthreats	<input type="radio"/>	<input type="radio"/>	<input type="radio"/>	<input type="radio"/>
Power failures	<input type="radio"/>	<input type="radio"/>	<input type="radio"/>	<input type="radio"/>
High winds	<input type="radio"/>	<input type="radio"/>	<input type="radio"/>	<input type="radio"/>
Climate change	<input type="radio"/>	<input type="radio"/>	<input type="radio"/>	<input type="radio"/>
Other	<input type="radio"/>	<input type="radio"/>	<input type="radio"/>	<input type="radio"/>

(Please add any extra information here)

* 8. What is the best way for you to receive information about hazards and emergency preparedness? (Check all that apply)

- | | | |
|--|--|--|
| <input type="checkbox"/> Email | <input type="checkbox"/> Schools | <input type="checkbox"/> Fire Department/Rescue |
| <input type="checkbox"/> Home phone (landline) | <input type="checkbox"/> TV News | <input type="checkbox"/> Church (faith-based institutions) |
| <input type="checkbox"/> Cellphone call | <input type="checkbox"/> Utility bill | <input type="checkbox"/> CERT Classes |
| <input type="checkbox"/> City Newsletters | <input type="checkbox"/> Radio | <input type="checkbox"/> Public Awareness Campaign (e.g., Flood Awareness Week, Winter Storm Preparedness Month) |
| <input type="checkbox"/> Social Media (i.e. Facebook, Nextdoor, Twitter, etc.) | <input type="checkbox"/> Mail - letter or postcard | <input type="checkbox"/> Academic Institutions |
| <input type="checkbox"/> Public Meetings | <input type="checkbox"/> Community groups or clubs | <input type="checkbox"/> Public Library |
| <input type="checkbox"/> County or City website | <input type="checkbox"/> Billboards | <input type="checkbox"/> American Red Cross |
| <input type="checkbox"/> Other (please specify) | | |

* 9. Does your street flood during rain events?

- Yes (If yes, please specify your home's intersection or street name below) No

(please specify your home's intersection or street name, if you experience street flooding during rain events)

* 10. Is your current home or housing located in or near a FEMA designated floodplain? If you're not sure, input your address into this FEMA flood zone tool: <https://msc.fema.gov/portal/search>

- Yes No

* 11. Is your current home or housing located near an earthquake fault? If you're not sure, type your address into this earthquake fault tool: <https://maps.conservation.ca.gov/cgs/EQZApp/app/>

- Yes No

* 12. Is your current home or housing located in an area at-risk for wildfire? If you're not sure, type your address into this wildfire risk tool: <https://www.buzzfeednews.com/article/peteraldhous/wildfire-risk-maps-search-your-home>

- Yes No



San Mateo County Multijurisdictional Local Hazard Mitigation Plan Update Survey 2021

Housing Status

* 13. What is your current housing status?

- Homeowner, owner-occupied
- Renter
- Currently unhoused or in temporary housing
- Other (please specify)



San Mateo County Multijurisdictional Local Hazard Mitigation Plan Update Survey 2021

* 14. Which of the following incentives would encourage you to spend money to retrofit your home to protect against disasters? (Check all that apply)

- | | |
|--|---|
| <input type="checkbox"/> Building permit fee waiver | <input type="checkbox"/> Low interest rate loan |
| <input type="checkbox"/> Insurance premium discount | <input type="checkbox"/> Grant funding |
| <input type="checkbox"/> Mortgage discount | <input type="checkbox"/> None |
| <input type="checkbox"/> Property tax break or incentive | |
| <input type="checkbox"/> Other (please specify) | |



San Mateo County Multijurisdictional Local Hazard Mitigation Plan Update Survey 2021

Housing information

* 15. To the best of your knowledge, does the home in which you live have an active flood insurance policy?

Yes

No

Not Sure

* 16. To the best of your knowledge, does the home in which you live have an active earthquake insurance policy?

Yes

No

Not Sure

17. Have you ever had problems getting homeowners or renters insurance due to risks from hazards?

Yes

No

If yes, what hazard was the cause of the problem?

* 18. Was the presence of a hazard risk zone (e.g., earthquake fault zone, dam failure zone, flood zone, landslide hazard area, or high fire risk area) disclosed to you by a real estate agent, seller, or landlord before you purchased or moved into your home?

Yes

No

* 19. Would the disclosure of this type of information influence your decision to purchase or move into a home in the future?

Yes

No



San Mateo County Multijurisdictional Local Hazard Mitigation Plan Update Survey 2021

Hazard Mitigation

20. Please indicate how you feel about the following statement:

"I believe it is the responsibility of government (local, state and federal) to provide education and programs that promote its residents to take action to reduce their exposure and risk to natural hazards."

	Strongly Disagree	Somewhat Disagree	Neither Agree nor Disagree	Somewhat Agree	Strongly Agree
Choose one:	<input type="radio"/>	<input type="radio"/>	<input type="radio"/>	<input type="radio"/>	<input type="radio"/>

21. Please indicate how you feel about the following statement:

"I believe it is my responsibility to educate myself about programs that reduce my exposure to natural hazards."

	Strongly Disagree	Somewhat Disagree	Neither Agree or Disagree	Somewhat Agree	Strongly Agree
Choose one:	<input type="radio"/>	<input type="radio"/>	<input type="radio"/>	<input type="radio"/>	<input type="radio"/>

22. If a natural disaster such as a large earthquake were to strike tomorrow, how would you feel regarding your personal safety?

- I live in a home that is structurally safe, I feel confident I would be safe
- I don't know about the structural integrity of my home but know that I have alternative safe places I could go
- I don't know about the structural integrity of my home, and I do not know where else I could go to feel safe
- I don't currently live in a home that would keep me safe during a large earthquake, and I don't know where else I would go to feel safe
- I do not currently live in a home that would be structurally safe during a large earthquake, but I have friends or family nearby where I could feel safe
- Other (please explain)



San Mateo County Multijurisdictional Local Hazard Mitigation Plan Update Survey 2021

General Household Information

The following demographic information will aid in evaluating the responses to this survey. The answers will be used only for the preparation of this plan and will not be provided to any other group or interest.

* 23. Please indicate your age range:

- | | |
|--------------------------------|-----------------------------------|
| <input type="radio"/> under 18 | <input type="radio"/> 41 to 50 |
| <input type="radio"/> 18 to 30 | <input type="radio"/> 51 to 60 |
| <input type="radio"/> 31 to 40 | <input type="radio"/> 61 or older |

24. Please indicate the primary language spoken in your household.

- | | |
|--|-------------------------------|
| <input type="radio"/> English | <input type="radio"/> Tagalog |
| <input type="radio"/> Spanish | <input type="radio"/> Arabic |
| <input type="radio"/> Chinese | <input type="radio"/> Tongan |
| <input type="radio"/> Other (please specify) | |

25. Are you of Hispanic, Latino, or Spanish origin?

- | | |
|--|--|
| <input type="radio"/> No, not of Hispanic, Latino, or Spanish origin | <input type="radio"/> Yes, Cuban |
| <input type="radio"/> Yes, Mexican, Mexican-American, Chicano | <input type="radio"/> Yes, another Hispanic, Latino, or Spanish origin -- ie. Salvadoran, Dominican, Colombian, Guatemalan, Spaniard, etc. |
| <input type="radio"/> Yes, Puerto Rican | |
| <input type="radio"/> Other (please specify) | |

26. What is your race?

- American Indian or Alaska Native
- Chinese
- Filipino
- Asian Indian
- Vietnamese
- Korean
- Japanese
- Native Hawaiian
- Samoan
- Chamorro
- Other Pacific Islander
- Black or African American (ie. African American, Jamaican, Haitian, Nigerian, Somali, etc.)
- Two or more races (if selected, please explain below)
- White (ie. German, Irish, English, Lebanese, Egyptian, etc.)
- Other (please specify)

27. What is your household income?

- <\$10,000
- \$10,000 - \$30,000
- \$30,001 - \$50,000
- \$50,001 - \$70,000
- \$70,001 - \$90,000
- \$90,001 - \$110,000
- \$110,001 - \$130,000
- \$130,001 - \$150,000
- \$150,001 - \$170,000
- \$170,001 - \$190,000
- \$190,001 - \$210,000
- \$210,000 - \$230,000
- >\$230,001
- Other (please specify)

* 28. What is your zip code?

29. Do you have internet access at your home?

Yes

No



San Mateo County Multijurisdictional Local Hazard Mitigation Plan Update Survey 2021

Comments (Optional)

If you have any questions or additional information you would like to share regarding local hazards and disasters, we invite you to provide your information on this page. This survey and your comments are completely confidential.

30. Comments

ATTACHMENT H

Addressing Equity in the Local Hazard Mitigation Plan

572/26



OFFICE OF
SUSTAINABILITY
COUNTY OF SAN MATEO

2/22/21

Presentation Outline

- Disaster Response Inequities
- Populations Vulnerable to Hazards
- San Mateo County Demographics
- Framework for Addressing Equity



Disaster Response Inequities

Many of the dead in Camp Fire were disabled, elderly. Could they have been saved?

BY [TONY BIZJAK](#), [ALEXANDRA YOON-HENDRICKS](#), [PHILLIP REESE](#), AND [MOLLY SULLIVAN](#)

DECEMBER 04, 2018 12:00 AM, UPDATED AUGUST 16, 2019 07:06 AM



The unequal vulnerability of communities of color to wildfire

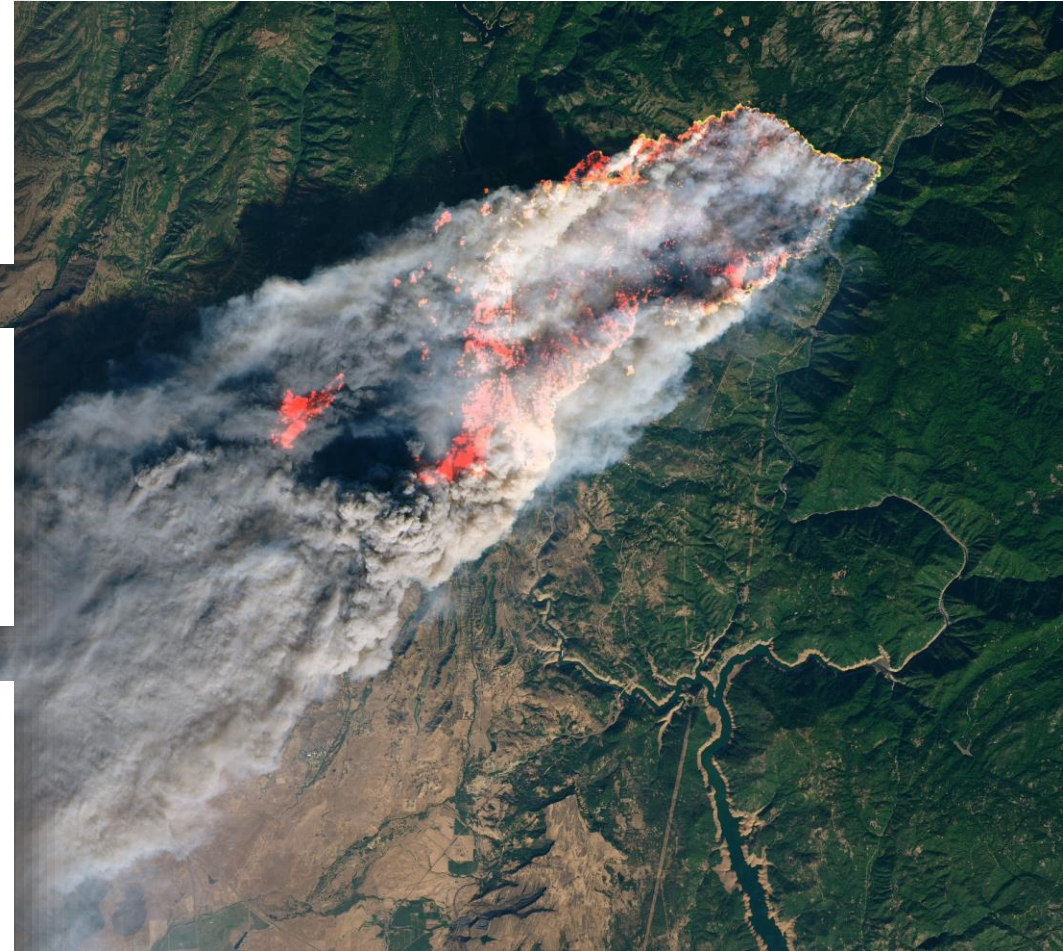
Ian P. Davies , Ryan D. Haugo, James C. Robertson, Phillip S. Levin

Published: November 2, 2018 • <https://doi.org/10.1371/journal.pone.0205825>

Oppressed By Wildfire: Language Barriers, Unwelcoming Attitudes Discourage Latinos From Seeking Help

April Ehrlich, September 18, 2019

592/26



2/22/21

Populations Vulnerable to Hazards

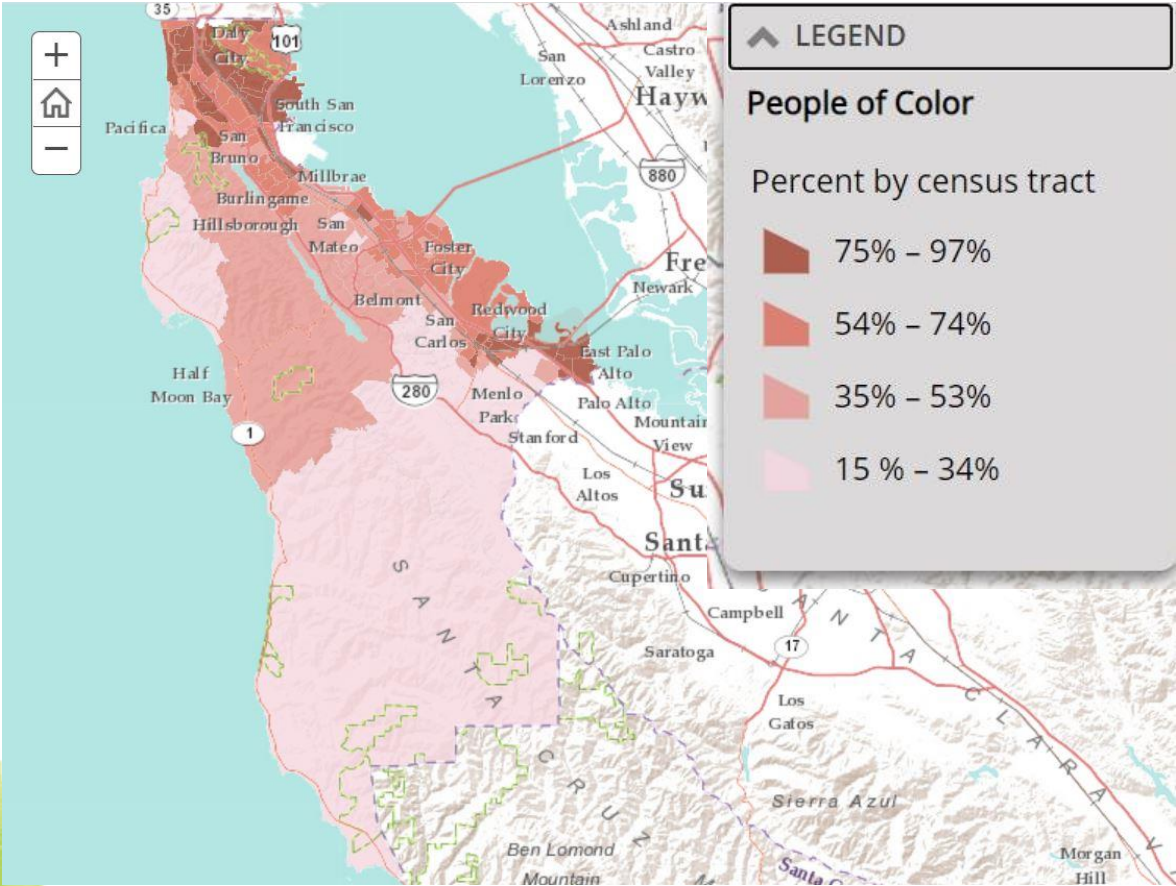
FEMA recognizes certain groups may be disproportionately impacted by disasters:

- Renters
- Women
- LGBTQ+ community
- People of color (**60% of SMC**)
- Tribal and First Nation communities
- Homelessness population
- Underserved communities with a low socioeconomic status
- Rural communities
- People with disabilities
- Elderly and youth populations
- Service workers and migrant laborers
- Institutionalized populations, in prisons and nursing homes
- People with limited English proficiency (**20% of SMC**)

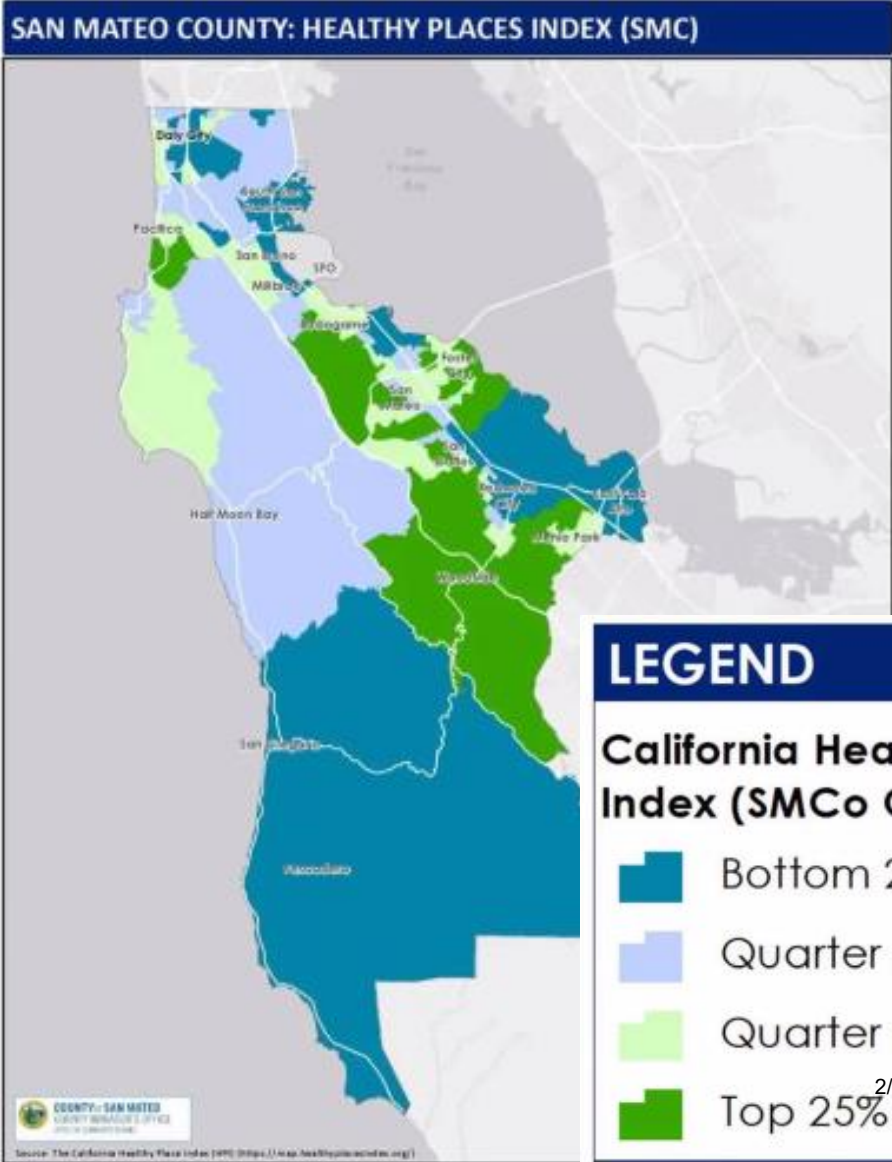
Source: FEMA Guide to Expanding Mitigation



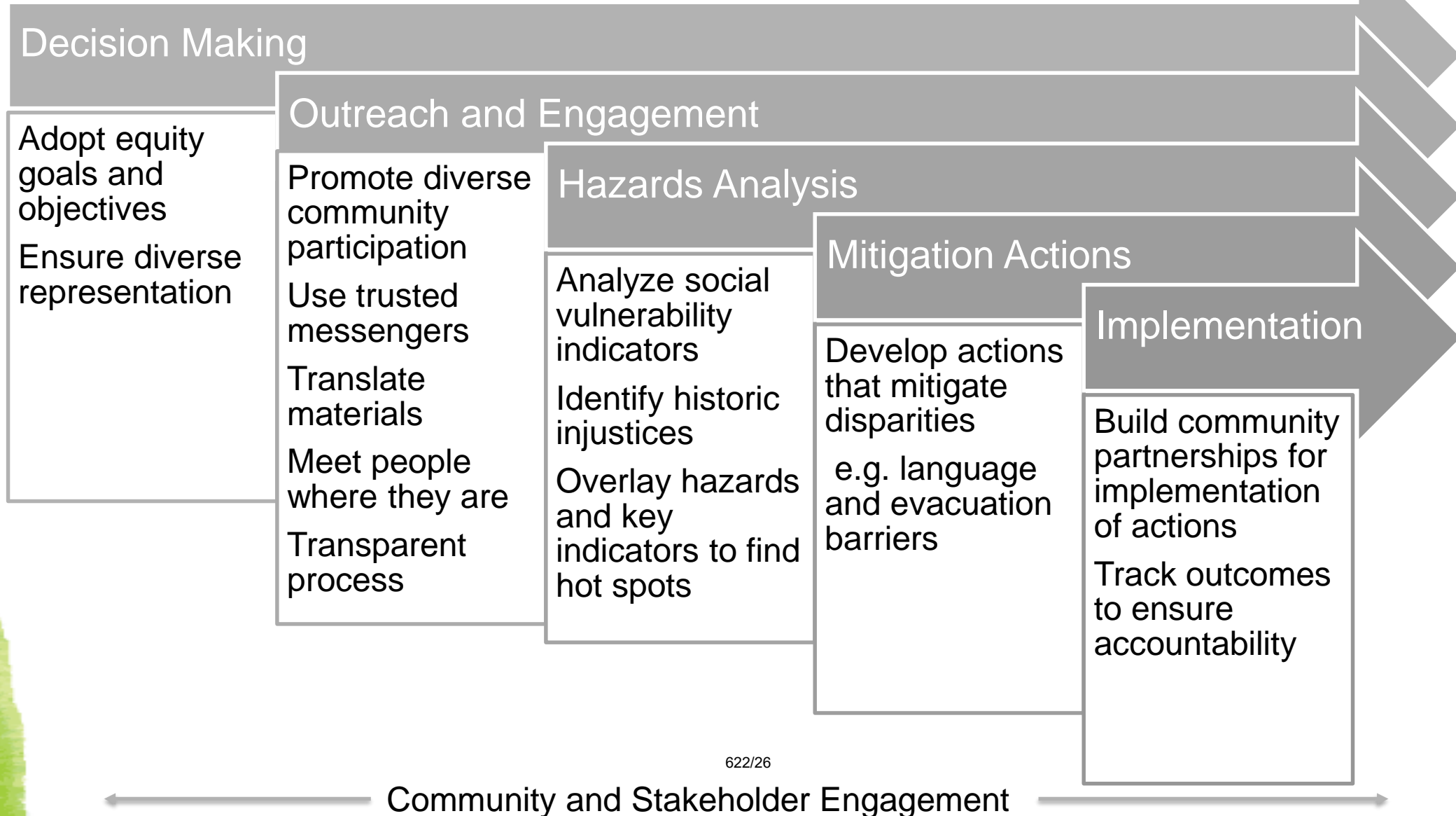
60% of SMC Residents are People of Color



Source: Get Healthy SMC



Framework for Addressing Equity



A photograph of a man and a young child walking on a sandy beach. The man is wearing a blue hoodie, a green t-shirt with 'WYATT 2020 USA' printed on it, and a black face mask. The child is wearing a purple and blue puffer jacket and light-colored pants. They are walking away from the camera towards the ocean. The background shows gentle waves washing onto the shore. The sky is bright, and the overall scene is peaceful.

Thank you

Hilary Papendick
Climate Change Program Manager
hpapendick@smcgov.org