

San Mateo County

Off-leash Dog Pilot Program Data Summary:

Monitoring Period 7 (September 2022 – October 2022)

Pilot Program Data Collection

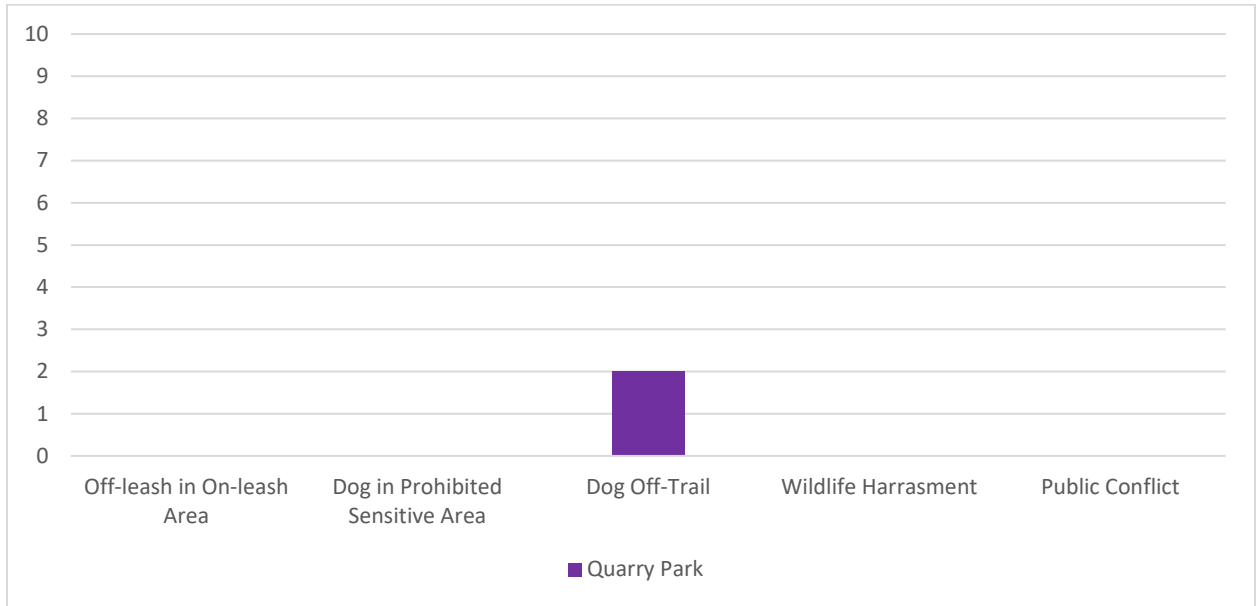
Table 1. Overall Dog Monitoring Results at Quarry Park as measured for September 2022 and October 2022.

	Standards	Quarry Park
Presence of dog waste ¹	No more than 20 occurrences in one month	58 instances per month
Harassment of wildlife	Dogs observed chasing or harassing wildlife two times over a 60-day period	0 instances
Dog entry to sensitive areas	No dogs observed entering Parks defined and signed sensitive areas	0 instances
Dogs traveling off-trail	Dogs observed traveling at 10 feet or more off trail	2 instances
Leash compliance for on-leash trails ²	70% of parties with dogs will have their dogs on a leash when using an on-leash trail	100% leash compliance
Interactions with dogs and visitors	Any dog is observed exhibiting unwelcome behavior(s) to other dogs or visitors 10 times per month	0 instances

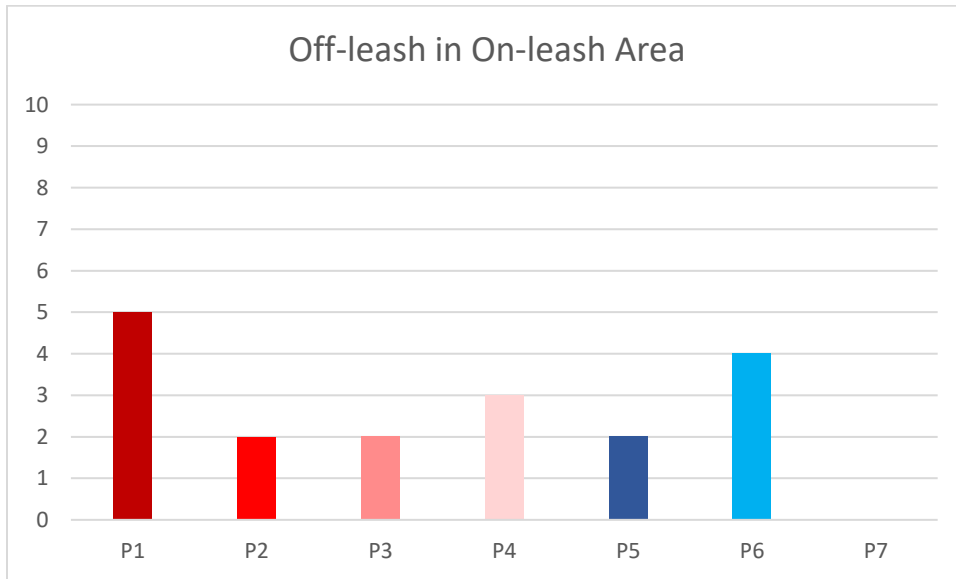
¹ “Per month” data for this row was calculated by averaging the total observations for each month indicated in table 2.

² Leash compliance data was calculated as the average percentage of “on-leash dogs in on-leash trails” out of “all dogs in on-leash trails” for the monitoring period.

Graph 1. Dog Monitoring Results (excluding “Presence of Dog Waste”) at Quarry Park as measured for September 2022 and October 2022.



Graphs 2a-d. Change in Dog Monitoring Results (excluding “Presence of Dog Waste”) at Quarry Park throughout all monitoring periods³.



³ “Wildlife harassment” is also excluded, due to there being no observed instances for any of the monitoring periods.

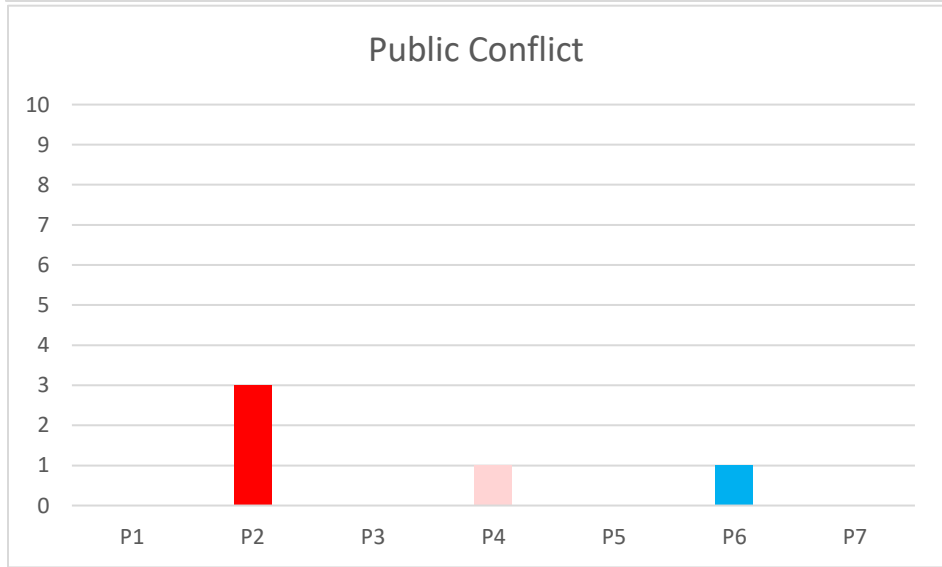
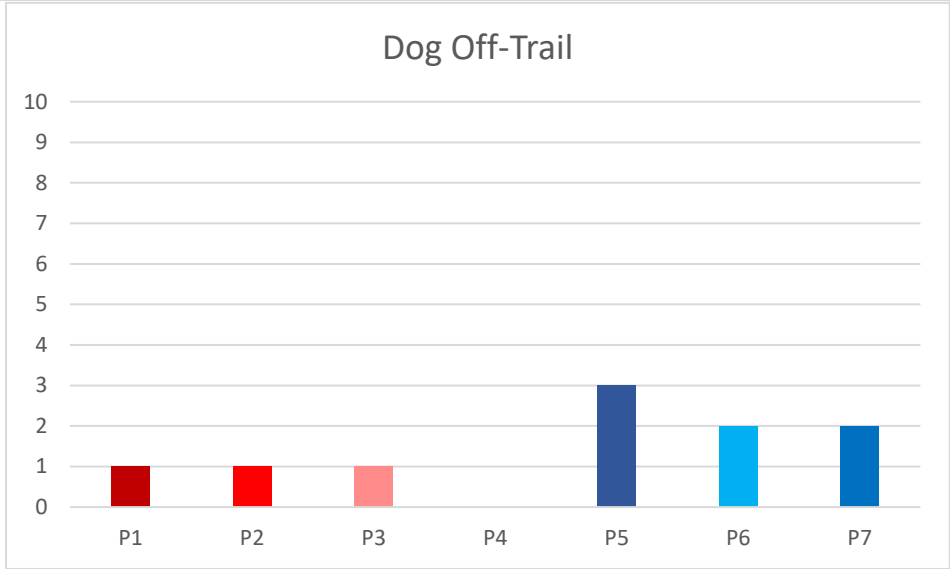
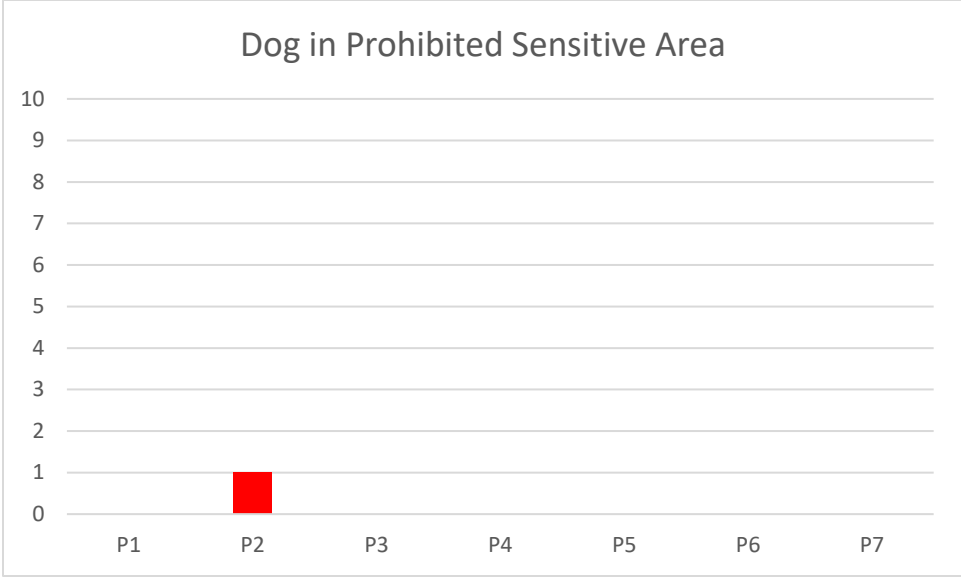


Table 2. Monthly Dog Monitoring Results for “Presence of Dog Waste” and “Interactions with Dogs and Visitors” at Quarry Park as measured for September 2022 and October 2022.

		September	October	Total
Quarry Park	Presence of Dog Waste	34 instances	81 instances	115 instances
	Interactions with Dogs and Visitors	0 instance	0 instances	0 instance

Graph 3. Dog Waste Comparison at Quarry Park as measured for September 2022 and October 2022.

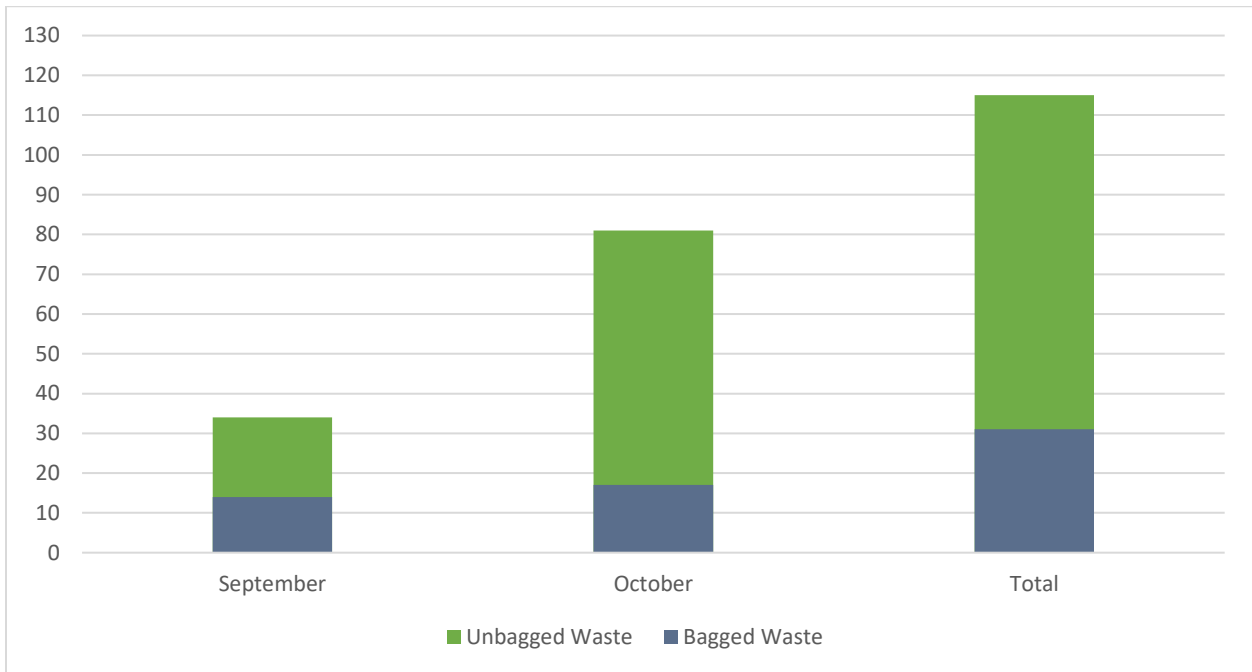


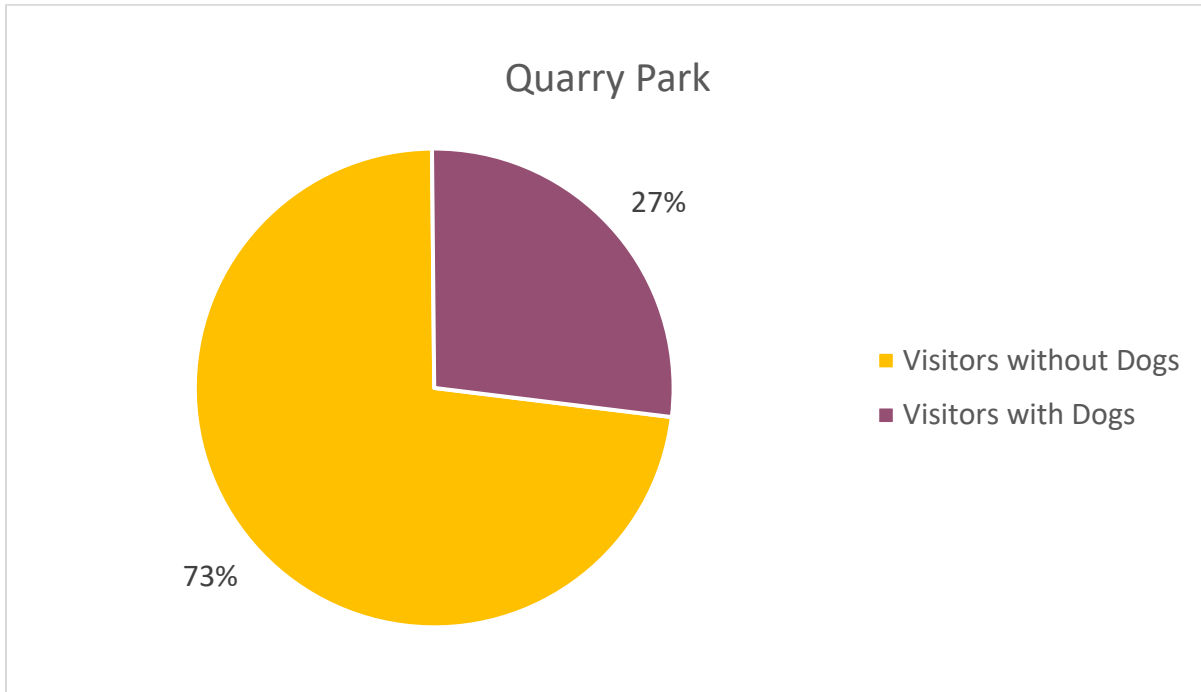
Table 3. Visitor Demographics at Quarry Park as measured for September 2022 and October 2022.

	Quarry Park	
Total visitors overall	705	
	Total	% of visitors overall
Visitors without dogs	514	73%
Visitors with dogs	191	27%

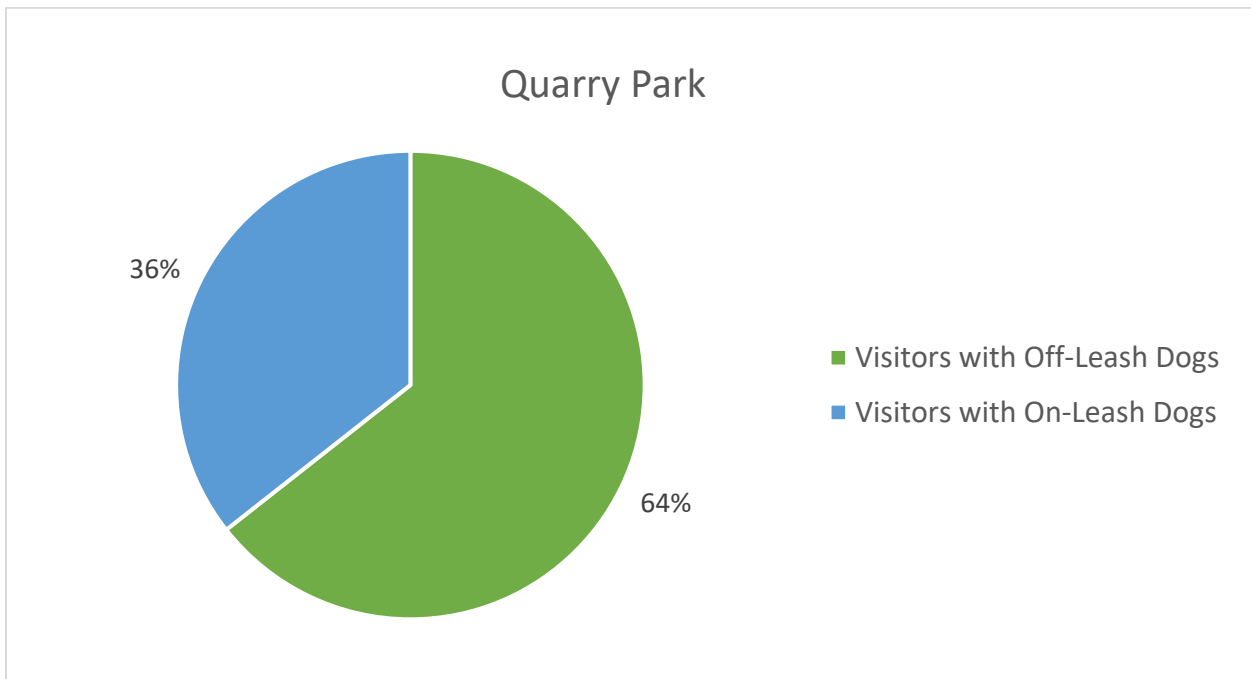
Table 4. Demographics of Visitors with Dogs at Quarry Park as measured for September 2022 and October 2022.

	Quarry Park	
Total visitors with dogs	191	
	Total	% of visitors with dogs
Visitors with off-leash dogs	123	64%
Visitors with on-leash dogs	68	36%

Graph 4. Percentage of Visitors with or without Dogs out of Total Visitors at Quarry Park as measured for September 2022 and October 2022.

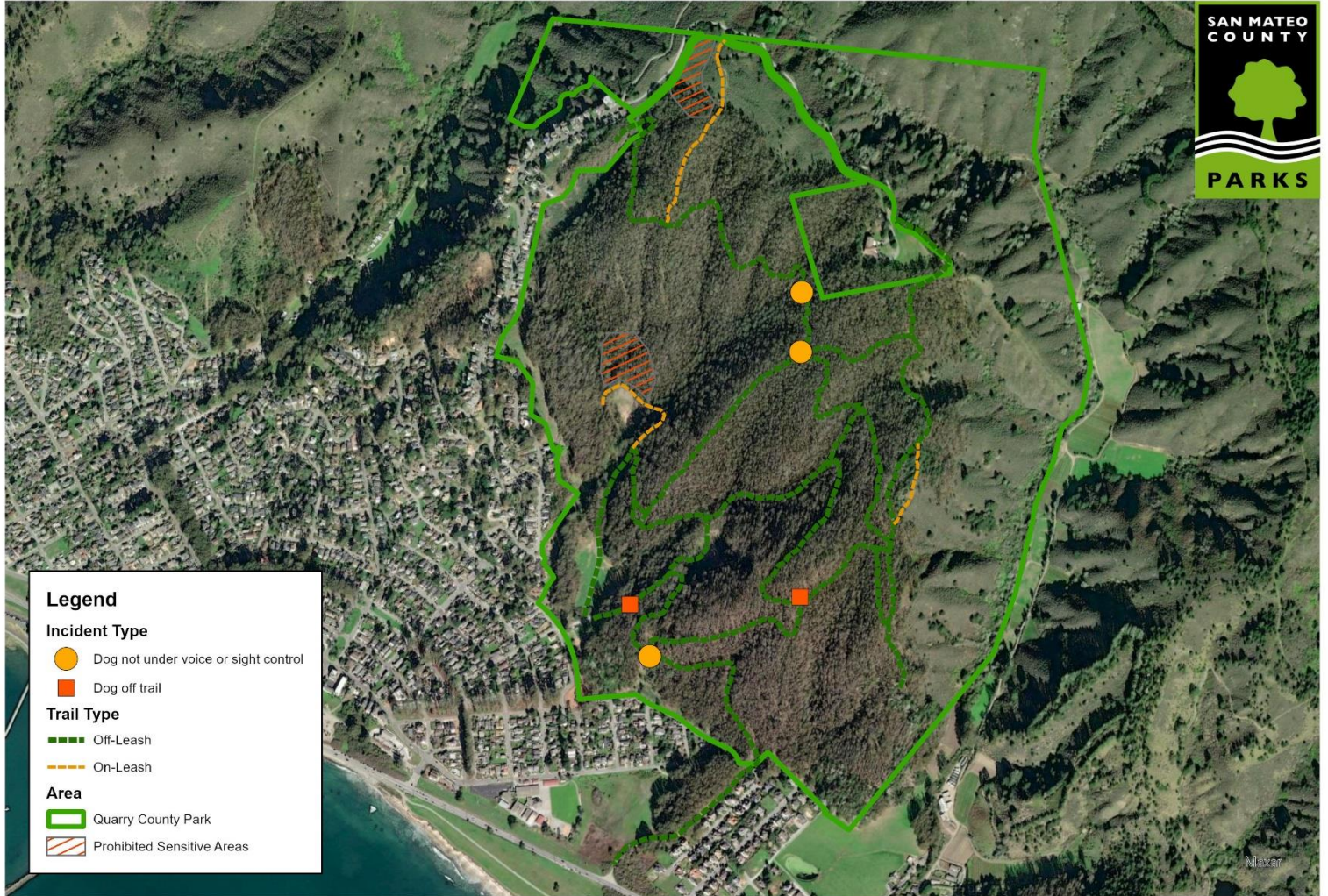


Graph 5. Percentage of Visitors with Off-Leash or On-Leash Dogs out of Visitors with Dogs at Quarry Park as measured for September 2022 and October 2022.



I. Maps

Map 1. Dog Monitoring Criteria (excluding “Presence of Dog Waste”) at Quarry Park as measured for September 2022 and October 2022.

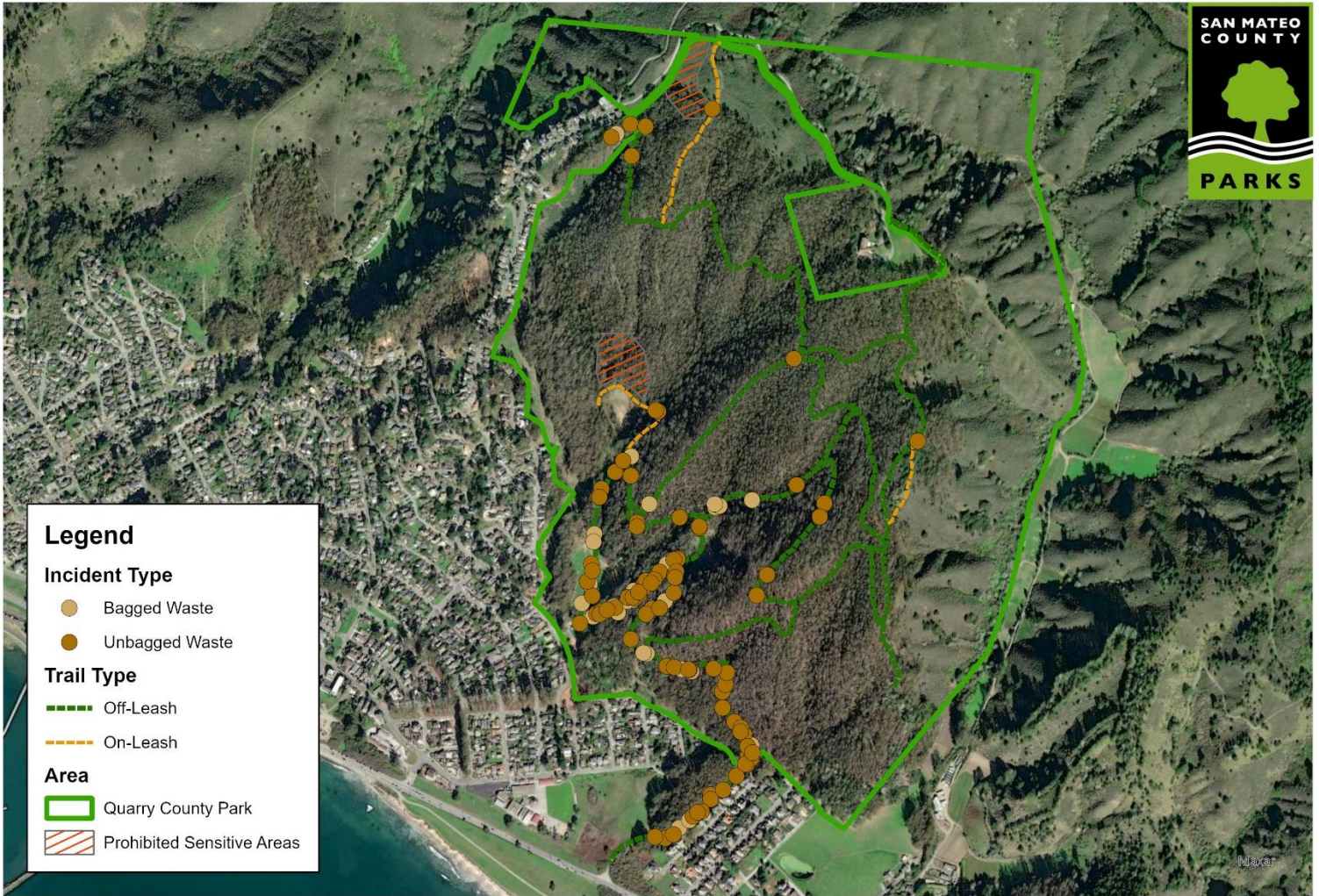


Dog Recreation Incidents: Quarry Park

0 0.25 0.5 Kilometers



Map 2. Dog Waste Observations at Quarry Park as measured for September 2022 and October 2022.



**Dog Recreation Incidents:
Quarry Park**

0 0.25 0.5 Kilometers



II. Summary of Results

During Monitoring Period 7, dog walkers complied with all monitoring criteria standards except presence of dog waste. The dog waste observations in both September and October were over the 20 occurrences per month standard with 34 occurrences in September and 81 occurrences in October. Comparison to Monitoring Period 6 reveals that leash compliance increased from 72.2% to 100%, and instances of dogs traveling off-trail remained the same at two instances. Harassment of wildlife, entry into prohibited sensitive areas both remained at zero, while public conflicts decreased from one instance to zero instances.

In terms of visitor demographics, 705 visitors were observed during Monitoring Period 7, with 27% recreating with dogs and 73% recreating without dogs. Sixty-four percent of visitors recreating with dogs at Quarry Park let their dogs off-leash, while 36% kept them on-leash. Compared to Monitoring Period 6, there was an increase in both the number of visitors observed without dogs and the number of visitors observed with dogs, with the former going from 236 to 514 and the latter from 156 to 191.

The Off-Leash Dog Recreation Pilot Program has been in effect for six months, and to date, six of the eight monitoring criteria have been consistently satisfied. These include harassment of wildlife, dog entry into sensitive areas, dogs traveling off-trail, leash compliance in on-leash areas, interactions between dogs and visitors, and changes in park visitor demographics. It is of note that throughout the pilot program, the Department has recorded that approximately 57% of visitors observed are recreating without dogs. This is consistent with pre-pilot program survey data indicating that, to date, the pilot program has not deterred those without dogs from visiting Quarry Park. Due to current drought conditions, no water quality sampling has been able to occur. The Department will continue to look for opportunities to conducting water quality testing when possible.

The one monitoring criteria that has not been satisfied is the presence of dog waste. The Department is working with the dog-owner community to conduct volunteer waste pick-up days and to increase compliance.

III. Courses of Action

In accordance with the Off-leash Dog Recreation Pilot Program's IS/MND, the Department has posted the following sign in Quarry Park:



San Mateo County Parks is conducting a one-year pilot program to explore allowing dogs and their owners to enjoy off-leash use of most trails in Quarry Park.

Not Disposing of Dog Waste Can Impact Off-Leash Pilot Success

For two consecutive monitoring periods the amount of dog waste left on trails has exceeded the pilot standard. For the pilot to succeed and for off-leash recreation to continue, dog waste must be picked up, bagged, and disposed of in a trash can.

Also remember:

- Keep dogs on trails and out of sensitive habitat.
- Keep dogs on leash in the parking lot and on-leash trails; dogs are not allowed in the playground or pump track area.
- Keep dogs within 25' and under voice/sight control.

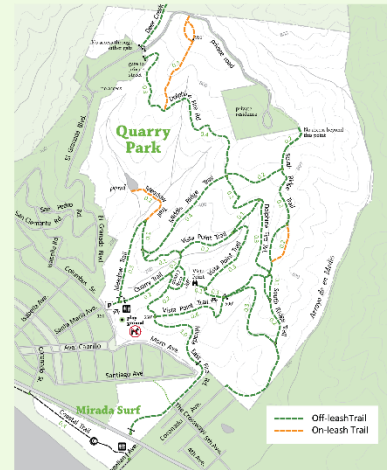
Let's all work together to keep off-leash dog recreation in the park!



Learn more about the Pilot Program

<https://www.smcgov.org/parks/leash-dog-pilot-program-quarry-park>

Leash Your Dog in Designated Areas



Look for signs:



Off-leash dogs OK



Dogs on leash OK



No dogs

Not Disposing of Dog Waste Can Impact Off-Leash Pilot Success

For two consecutive monitoring periods the amount of dog waste left on trails has exceeded the pilot standard. For the pilot to succeed and for off-leash recreation to continue, dog waste must be picked up, bagged, and disposed of in a trash can.

Also remember:

- Keep dogs on trails and out of sensitive habitat.
- Keep dogs on leash in the parking lot and on-leash trails; dogs are not allowed in the playground or pump track area.
- Keep dog(s) within 25' and under voice/sight control.

Let's all work together to keep off-leash dog recreation in the park!

As this is the second monitoring period during the pilot in which dog waste observed exceeds the standard that was set, the Department will continue monitoring and consider new management approaches to gain compliance with standards. The figure below is included in the adaptive management plan for the off-leash dog recreation pilot, identifying the decision-making that the Department will need to make regarding the pilot and appropriate management.

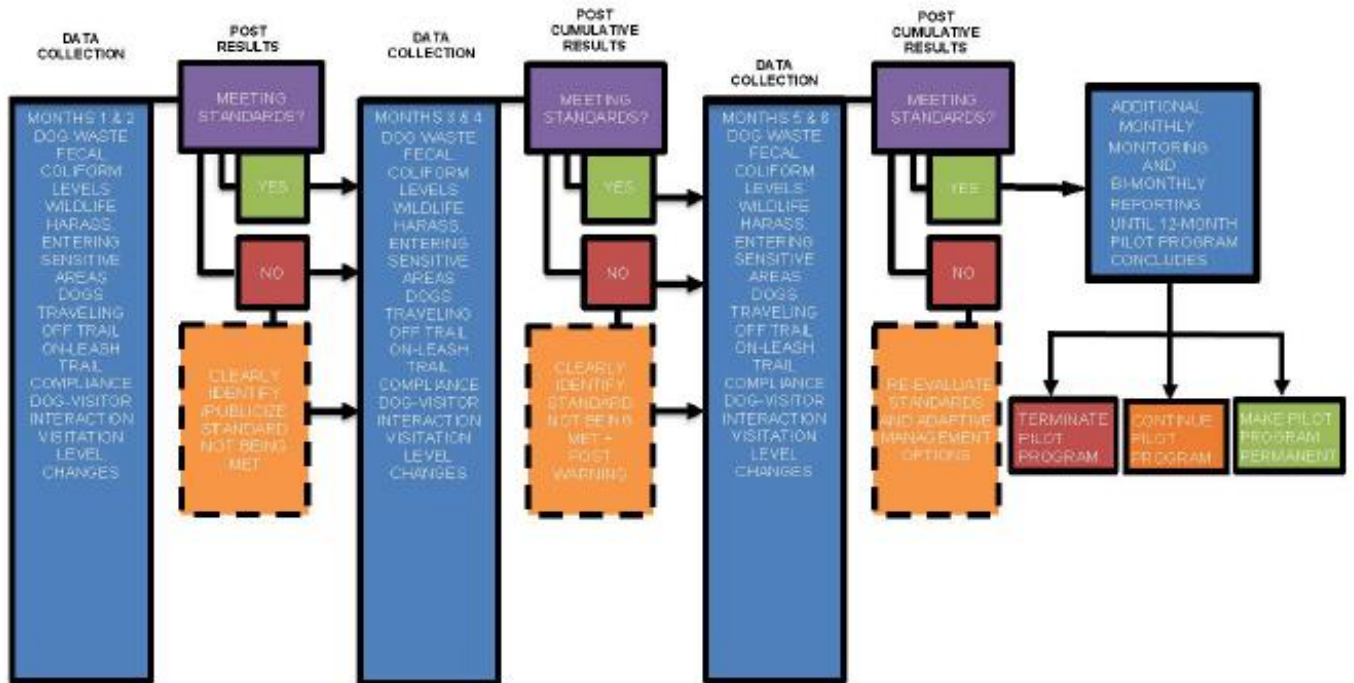


Figure 4. Adaptive Management Decision Flow Chart